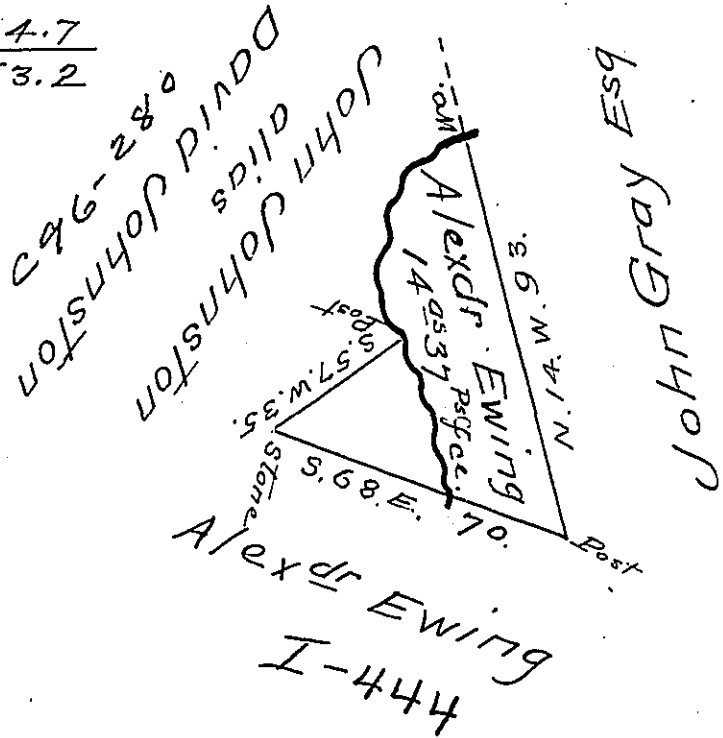


Courses & Dist. Down Spruce
Creek from the wo to the post

S. 5 5/2 W	17 1/2
S. 14 W	11
S 9 1/2 E	20
S 9 E	4.7
	<hr/>
	53.2



Situate in Franklin Township Huntingdon
County Containing fourteen acres 37 perches and
allowance Surveyed May 26th 1810 in pursuance
of a Warrant Granted to Alexander Ewing dated
February 5th 1810

Jm^o Morrison D.S.

Andrew Porter Esq }
Surveyor General }

IN TESTIMONY that the above is a copy of the original remaining on file in
the Department of Internal Affairs of Pennsylvania, made
conformably to an Act of Assembly approved the 16th day of
February, 1833, I have hereunto set my Hand and caused
the Seal of said Department to be affixed at Harrisburg,
this fifteenth day of September 1904.

Isaac D. Brown
Secretary of Internal Affairs.